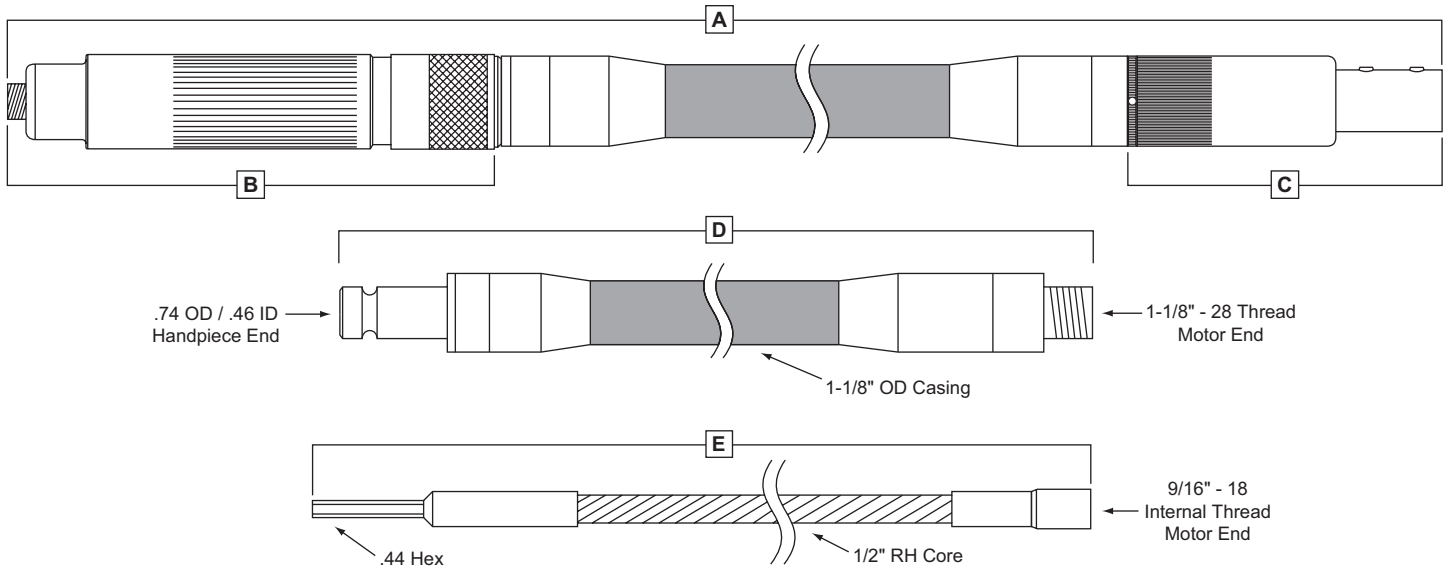


# No. 30 - Industrial Flex Shaft

For Use With a 3/4 hp Power Unit



## Item "A" #481-316 — Assembly, #30 Industrial Flex Shaft; 5/8" Diameter (7 ft. long)

Item	EPN	Description
B	555-510	Assembly, Handpiece, 551 (Spindle is 9/16" - 18" Thread)
C	345-500	Assembly, Coupling; Motor; 550-MP 5/8" I.D. Size
D	211-217	Assembly, Casing, K-30 (Overall Length is 79")
E	321-307	Assembly, Core, C-30 (Overall Length 81-7/8")

## Item "A" #481-317 — Assembly, #30 Industrial Flex Shaft; 3/4" Diameter (7 ft. long)

Item	EPN	Description
B	555-510	Assembly, Handpiece, 551 (Spindle is 9/16" - 18" Thread)
C	345-503	Assembly, Coupling; Motor; 550-MP 3/4" I.D. Size
D	211-217	Assembly, Casing, K-30 (Overall Length is 79")
E	321-307	Assembly, Core, C-30 (Overall Length 81-7/8")

**For a detail drawing of item "B" and "C", see other side of page.**

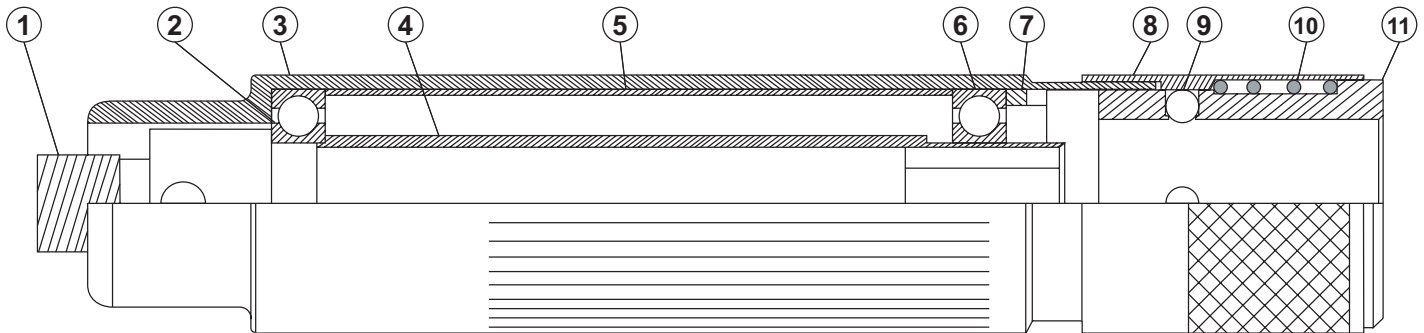
### General Instructions

The above #30 Flex Shaft is 7 feet long with a Ball Bearing Motor Coupling to fit on the customer's Motor or Power Drive with a 5/8" or 3/4" driveshaft. Elwood-Wyco Wheel Arbors for grinding wheels, wire brushes, etc., with 3/8, 1/2 or 5/8" arbor holes are available. There are also Rasp Adapters for using Rasps with internal threads 3/8" - 16 and 1/2" - 13.

# No. 30 - Industrial Flex Shaft

For Use With a 3/4 hp Power Unit

## No. 551 "Quick Change" HANDPIECE

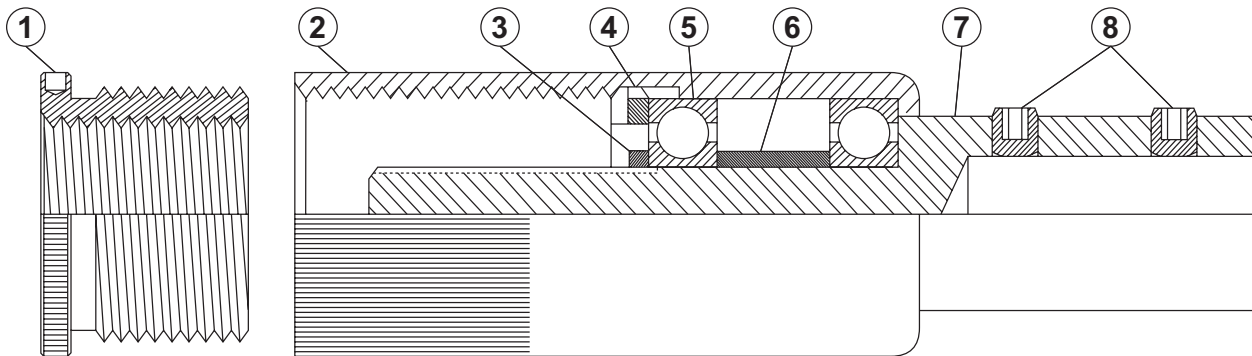


### PARTS LIST

Item	EPN	Qty.	Description
1	795-072	1	Spindle, #507-P
2	098-334	1	Bearing, Ball; Sealed
3	765-501	1	Shell, Handpiece; Black
4	385-442	1	Sleeve, Hex
5	785-280	1	Spacer, Bearing
6	098-332	1	Bearing, Ball; Shielded

Item	EPN	Qty.	Description
7	708-380	1	Ring, Lock
8	765-322	1	Sleeve, Quick Change
9	091-400	4	Ball, Steel
10	805-320	1	Spring, Quick Change
11	778-380	1	Socket, Handpiece

## No. 550-MP Ball Bearing Motor Coupling



### PARTS LIST

Item	EPN	Qty.	Description
1	175-360	1	Bushing, Reducing
2	765-502	1	Shell, Coupling; Plated
3	432-545	1	Nut, Hex Lock
4	708-380	1	Ring, Lock
5	098-334	2	Bearing, Ball

Item	EPN	Qty.	Description
6	785-282	1	Spacer, Motor Coupling
7	345-451	1	Coupling, Motor; 5/8"
7	345-452	1	Coupling, Motor; 3/4"
8	434-030	2	Screw, Set, 5/16" - 18"

### Maintenance and Lubrication Instructions

**Handpiece:** Bearings are lifetime lubricated and need no further lubrication. **To remove bearings for replacement:** (a) Remove socket by using flat side or wrench in slot of socket. (b) Remove Lock Ring (4). Bearing assembly (3, 5, 6, 7 & 8) will now slide out. (c) Clean parts with a clean cloth. **DO NOT** dip bearings in solvent.

**Coupling:** **To detach core from coupling after casing is removed:** (a) Fasten locking pliers over core end. (b) Hold coupling in vise. (c) Turn Pliers (R.H. threads) and remove core end. **To disassemble coupling:** (a) Remove reducing bushing (1) (b) Remove lock ring. The coupling and bearing assembly will slide forward for removal (c) Remove hex nut (3). Bearings are now free for removal.

**Flex Shaft:** Lubricate core after every 50 hours of operation using Elwood-Wyco lubricant. Loosen the casing to expose about 18" of core and apply a liberal amount of lubricant to the exposed section of core and re-install the casing. The lubricant will travel the full length of the shaft when in use.